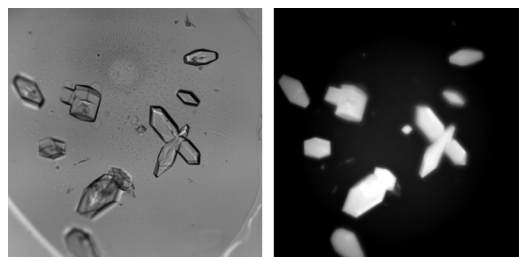


JANSi UVEX Imaging system

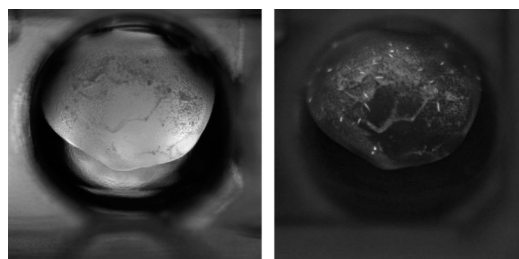
SWISSCI and JAN Scientific have partnered to bring the UVEX imaging systems to the market. With over 100 installations around the world the UVEX is becoming the crystallographers go-to tool for the rapid detection and intuitive classification of protein crystals.

Key Features:

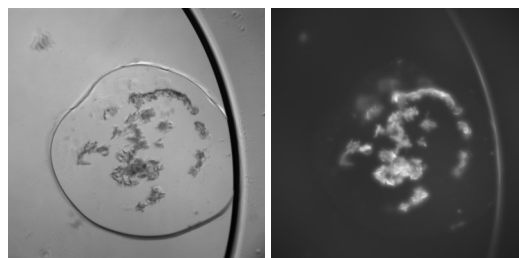
- Cooled, high-efficiency 6 MP monochrome UV camera
- LED light sources, low maintenance and long lasting
- An industry-leading resolution of 0.2 micron/pixel with optional objectives
- UV excitation/emission optimised for Trp fluorescence
- Intuitive software with image management.
- Z slicing to produce a composite, extended depth image
- Automatic drop centering with manual override*
- Standalone UVEX-p can be retrofitted into our plate hotels with a huge cost saving*
- Various options available including: Colour birefringence, UV absorbance, additional objectives



Detect protein crystals with ease



Detect micro-crystals hidden in precipitate



Powerful imaging of protein crystals in LCP



UVEXm



UVEXp



UVEXps256



UVEXm

Includes: Tray table, 5X and 15X objectives, brightfield and UV imaging, Computer, monitor and all software

Options: Motorized Z, Manual X/Y stage, additional objectives, UV absorbance, cross-polarisers.

Dimensions: 30 x 20 x 50 cm **Weight:** 12 kg

Power: 110–240 V 50 Hz/60 Hz 60 kWh



UVEXp

Includes: Automated imaging crystallisation plates, extended depth imaging, 5X, 10X (or 15X) and 20X objectives, all software, computer and monitor,

Options: additional objectives, UV absorbance, colour cross-polarisers.

Dimensions: 30 x 35 x 50 cm **Weight:** 16 kg

Power: 110–240 V 50 Hz/60 Hz 120 kWh



UVEXps 256 /600

Includes: UVEXp, Smooth low-vibration operation to move plates, Built-in sensors to monitor the status of a plate, Collision detection and recovery, Built-in barcode scanner, configurable storage shelves for standard and low, high-profile or LCP SBS plates, Shelf capacity can be changed in field (some restrictions apply), Built in IR cameras, Barcode printer with 4000 labels

Options: Temperature control 4 – 25 °C (*available for UVEXps256)

Dimensions: UVEX256 : w90 x d72 x h212 cm UVEXps600: w90 x d95 x h212 cm **Weight:** 350 and 450 kg

Power: 110–240 V 50 Hz/60 Hz 0.5 kWh

sales@swissci.com

SWISSCI LTD

Merlin Road

Lancaster House

High Wycombe

Buckinghamshire

HP12 3PY UK