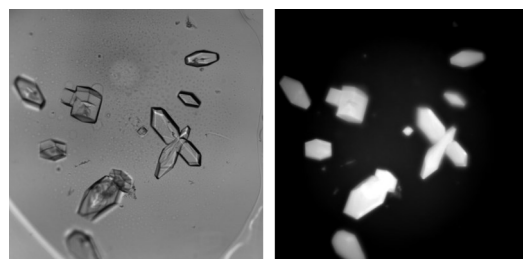


SWISSCI and JAN Scientific have partnered to bring the UVEX imaging systems to the market. With over 100 installations around the world the UVEX is rapidly becoming a go-to tool for the rapid detection and intuitive classification of protein crystals.

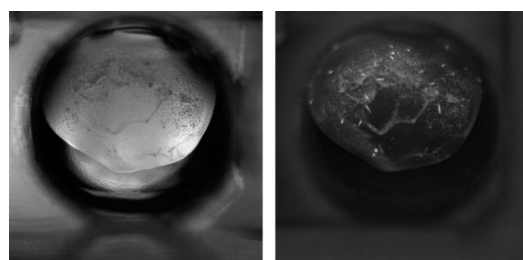


Key Features:

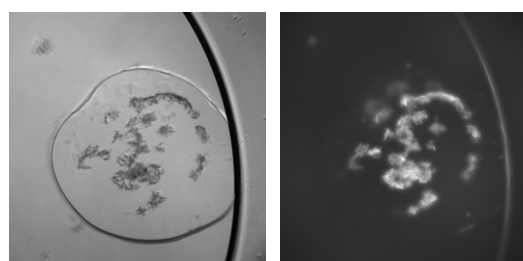
- Cooled, high-efficiency 6 MP monochrome UV camera
- LED light sources, low maintenance and long lasting
- An industry-leading resolution of 0.2 micron/pixel with optional objectives
- UV excitation/emission optimised for Trp fluorescence
- Intuitive software with image management.
- Z slicing to produce a composite, extended depth image
- Auto-focus*
- Automatic drop centring with manual override*
- Standalone UVEX-p can be retrofitted into our plate hotels with a huge cost saving*
- Various options available including; Colour birefringence, UV absorbance, additional objectives



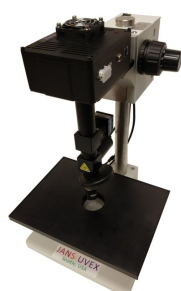
Detect protein crystals with ease



Detect micro-crystals hidden in precipitate



Powerful imaging of protein crystals in LCP



UVEXm



UVEXp



UVEXps256



UVEXm

Includes: Tray table, 5X and 15X objectives, brightfield and UV imaging, Computer, monitor and all software

Options: Motorized Z, additional objectives, UV absorbance, cross-polarisers.

Dimensions: 30 x 20 x 50 cm **Weight:** 12 kg

Power: 110-240 V 50 Hz/60 Hz 60 kWh



UVEXp

Includes: Automated imaging crystallisation plates, extended depth imaging, 5X, 10X (or 15X) and 20X objectives, all software, computer and monitor,

Options: additional objectives, UV absorbance, colour cross-polarisers.

Dimensions: 30 x 35 x 50 cm **Weight:** 16 kg

Power: 110-240 V 50 Hz/60 Hz 120 kWh



UVEXps 256 / 600

Includes: UVEXp, Smooth low-vibration operation to move plates, Built-in sensors to monitor the status of a plate, Collision detection and recovery, Built-in barcode scanner, configurable storage shelves for standard and low, high-profile or LCP SBS plates, Shelf capacity can be changed in field (some restrictions apply), Built in IR cameras, Barcode printer with 4000 labels

Options: - Temperature control 4 – 25 C (*available for UVEXps256) - Peltier Temp Regulation (available for both models)

Dimensions: UVEX256 : w90 x d72 x h212 cm UVEXps600: w90 x d95 x h212 cm **Weight:** 350 and 450 kg

Power: 110-240 V 50 Hz/60 Hz 0.5 kWh

*Available on the UVEXp + UVEXps models